

TGCC

# The North/South Appalachian Highway Project

## The North/South Appalachian Highway Coalition Mission Statement

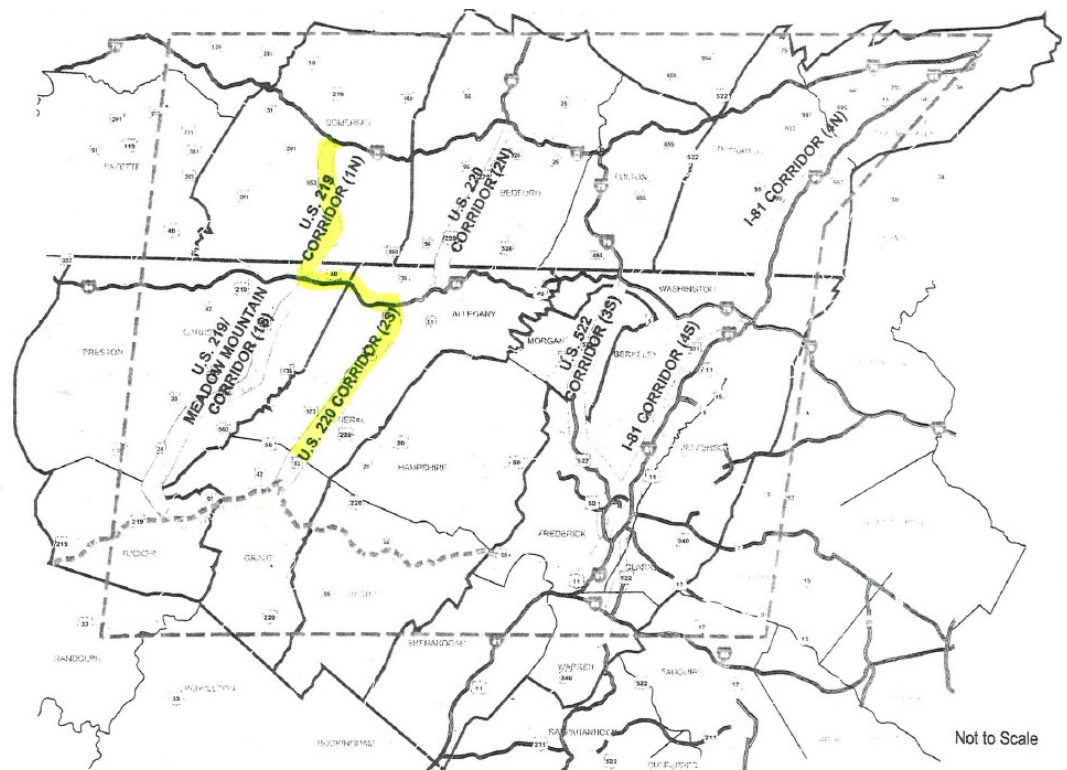
*“There’s about \$300 million in PA’s Appalachian highway fund and a big chunk would go to Route 219. The state needs the toll credits to use as the federal match. I’m working closely with other members of the PA delegation to get toll credits restored, but until we get a highway bill, it’s only discussions.”*

*-U.S. Rep. Bill Shuster (PA); Daily American, 9/23/09*

*The mission of the North South Appalachian Highway Coalition is to advance economic development in the Laurel Highlands of Southwestern Pennsylvania, Mountain Maryland and the Potomac Highlands of West Virginia by leading efforts to complete the transportation corridor linking the Pennsylvania Turnpike in Somerset, I-68, and Corridor H. Coalition partners will include businesses, civic organizations, elected officials, government entities and media outlets. Our goal is to create an energetic grassroots campaign, culminating in a powerful voice of advocacy with a singular purpose to complete the North South Appalachian Highway.*

### Inside this issue:

Coalition Mission	1
N/S Map	1
Project Value Points	2
Support Received	2
Coalition Members	3
TGCC Mission	4
Action Plan & Advancements	4
N/S Core WG Members	4



*“Maryland restores its portion of U.S. 220 study funding” - Cumberland Times-News; 9/15/09*

## Project Value Points

- The **Appalachian Development Highway System (ADHS)** was authorized in 1965 by Congress to **generate economic development**, supplement the interstate system, and provide access to new markets in the traditionally isolated areas of Appalachia.
- The ADHS envisions **3,100 miles** of roads of which **86.5% are complete**. Completion of the ADHS remains a top priority for ARC.
- In 1998, Wilbur Smith Associates completed an economic impact study of the economic impact of nearly 1/2 of the completed ADHS corridors and concluded that the **ADHS created 16,000 new jobs** and yielded economic benefits of \$1.32 for every \$1 invested.
- The North/South Appalachian Corridor Feasibility Study, completed in 2001, identified the **alignment of US 219 N and US 220 S as having the most significant impact on economic development and job creation** of the 7 corridors studied.
- Improvements to **219N** were estimated to create **2400-2600 new permanent jobs and 8000 construction-related jobs** while improvements to the **220 S** section were estimated to create **7800-8600 new permanent jobs and 12000 construction-related jobs**.
- **TOTAL** projected economic impact of the completed North/South Appalachian Highway: **30,000 permanent and construction-related jobs**.
- The value of Corridor H in West Virginia includes the potential as an **evacuation route** from the nation's Capitol; the North/South Appalachian Highway connects to Corridor H, providing enhanced evacuation options.

## N/S Appalachian Highway Resolutions Received

Somerset County Board of Commissioners—June 9, 2009  
Garrett County Board of Commissioners—August 10, 2009  
Allegany County Board of Commissioners—August 20, 2009  
City of Cumberland—September 8, 2009  
Allegany County Planning & Zoning Commission—September 23, 2009  
Mineral County Commission—October 13, 2009

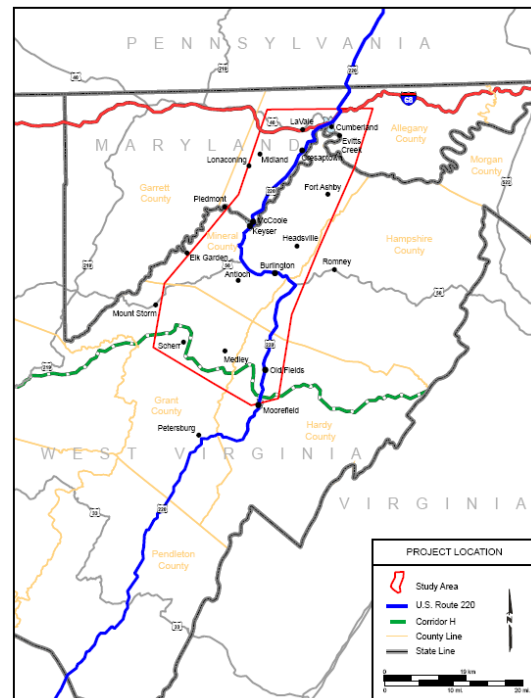
## Letters of Support Received

District 1 Delegation (MD) - June 2, 2009  
Senator George Edwards  
Delegate Wendell Beitzel  
Delegate Kevin Kelly  
Delegate LeRoy Myers

WV Legislators—July 13, 2009  
Senator Dave Sypolt—District 14  
Senator Bob Williams o District 14  
Senator Walt Helmick—District 15  
Senator Clark Barnes—District 15  
Delegate Robert Schadler—District 49  
Delegate Harold Michael—District 47  
Delegate Allen Evans—District 48  
Delegate Mike Ross—District 37

Senator Richard A. Kasunic, 32nd District (PA) - September 8, 2009  
Representative Frank Burns, 72nd District (PA) - September 15, 2009  
Representative Carl Walker Metzgar, 69th District (PA) - October 5, 2009  
Knepper Insurance Group, (Somerset, PA) - October 6, 2009  
Johnstown Area Regional Industries—October 9, 2009  
Somerset County Economic Development Council—October 16, 2009  
Southern Alleghenies Planning & Development Commission—October 22, 2009  
Meyersdale Area School District—October 27, 2009

### US 220 SOUTH



# Coalition Partners—*as of November 2, 2009*

## STATE OF MARYLAND

Allegany County Chamber of Commerce  
 Allegany County Commissioners  
 Allegany County Planning & Zoning Commission  
 City of Cumberland Mayor & Town Council  
 Cumberland Allegany County Industrial Foundation (CACIF)  
 District 1 Delegation  
     Senator George Edwards  
     Delegate Wendell Beitzel  
     Delegate Kevin Kelly  
     Delegate LeRoy Myers  
 Garrett County Chamber of Commerce  
 Garrett County Commissioners  
 Garrett County Development Corporation  
 Grantsville Mayor & Town Council  
 Tri-County Council of Western Maryland

## Allegany & Garrett County Business Leaders

Dr. Matthew Allaway, Urology Associates  
 John. H. Balch, PharmaCare of Cumberland  
 Olen Beitzel, Beitzel Corporation  
 Carl O. Belt, Carl Belt Inc.  
 Stacey Bingaman, First Peoples Community FCU  
 Linda Bolden, Wayne's Water & Wells  
 Matthew Brewer, Bennett, Brewer & Associates  
 Larry Cantrell, AES Warrior Run  
 Dr. Thomas Chappell, physician  
 Richard J. Collins, Mel's Business Systems, Inc.  
 Gordon Cooley, PNC Bank  
 Gary Curtis, NewPage Corporation  
 Richard Daugherty, Chessie Federal Credit Union  
 Mike Dreisbach, Savage River Lodge  
 E. William Du Vall, II, Western MD B&C Trades Council  
 Dr. Bruce Exstrom, Allegany College of Maryland  
 Thomas B. Finan, Jr., private investor  
 William E. Freas, Jr., Care Ventures, Inc.  
 Kathy Getty, Susquehanna Bank  
 Dr. Jonathan Gibraltar, Frostburg State University  
 David W. Gilles, Potomac Farms Dairy  
 Tim Grambley, Rocky Gap Lodge & Golf Resort  
 William B. Grant, First United Bank & Trust  
 Greg Hare, Document Solutions, Inc.  
 Will Jenkins, Allegany Coal and Land Co.  
 Michael A. Joy, Joy Developers, LLC  
 Jonathan "Smiley" Kessler, Cascade Property Management  
 George W. Lapp, Jr., R.H. Lapp & Sons, Inc.  
 Kim Leonard, Aircon Engineering  
 John R. Markwood, KFM, LLC  
 David C. Mathews, Standard Bank  
 Don McGettigan, Allegheny Energy  
 Kelly Moran, Kelly Moran, LLC  
 Ray Morriss, CSX Transportation  
 Mike Nestor, Thrasher Engineering  
 Marlee Ort, The Fibred Group  
 Dr. Jeffrey Poland, Lifetime Eyecare Center  
 Nancy Railey, Railey Mountain Lake Vacations  
 Troy Raines, Egle Nursing & Rehab Center

Dr. Scott Rifkin, Allegany Nursing and Rehabilitation/Mid-Atlantic Health Care, LLC  
 Todd Riggelman, AI Gar FCU  
 Barry Ronan, Western Maryland Health System  
 Sandra K. Saville, private investor  
 David Sensabaugh, Queen City Business Systems  
 Sheri D. Sensabaugh, ACT Personnel Service, Inc.  
 Amy Schwab Owens, Life Fitness Management  
 J. Robert Smith, Allegany Aggregates  
 John Smyth, CBIZ, Riggelman & Smyth  
 Dr. Howard Strauss, Western MD Surgery Center  
 Casper R. Taylor, Jr., Alexander & Cleaver  
 David W. Turnbull, Turnbull, Hoover & Kahl, P.A.  
 Roy "Bucky" Whiteman, Progressive Physical Therapy  
 John W. Yoder, Walter N. Yoder & Sons, Inc.  
 Marc E. Zanger, CBIZ

## PENNSYLVANIA

Johnstown Area Regional Industries  
 Meyersdale Area School District  
 Somerset County Chamber of Commerce  
 Somerset County Commissioners  
 Somerset County Economic Development  
 Southern Alleghenies Planning & Development Commission  
 Senator Richard A. Kasunic, 32<sup>nd</sup> District  
 Representative Frank Burns, 72<sup>nd</sup> District  
 Representative Carl Walker Metzgar, 69<sup>th</sup> District

## Pennsylvania Business Leaders

Knepper Insurance Group

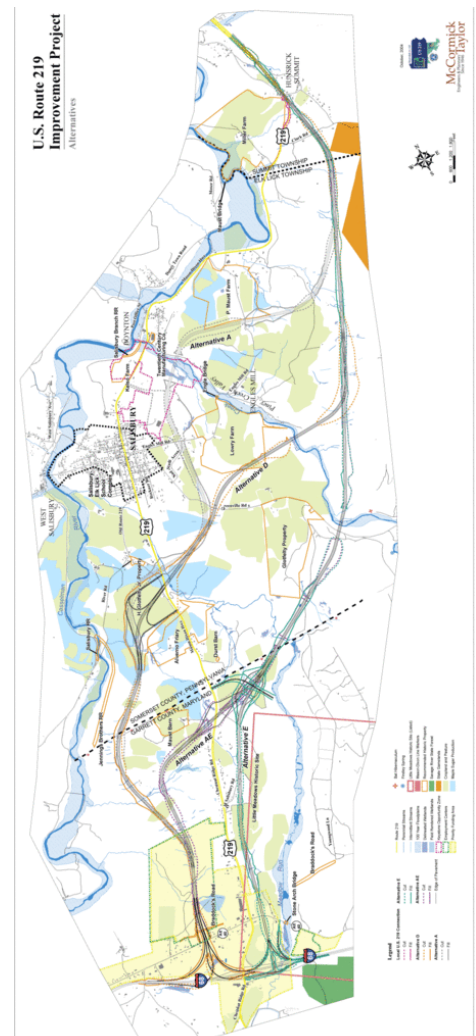
## WEST VIRGINIA

Mineral County Commission  
 Senator Clark Barnes  
 Delegate Allen V. Evans  
 Senator Walt Helmick  
 Delegate Harold Michael  
 Delegate Mike Ross  
 Delegate Robert A. Schadler  
 Senator Dave Sypolt  
 Senator Bob Williams

## Mineral County Business Leaders

Dr. Harry Boggs, Keyser Industrial Park  
 Keith Funkhouser, ATK  
 James T. Kauffman, Automated Packaging Systems  
 Dr. Kerry Odell, Potomac State College of WVU  
 Linda Shroyer, Potomac Valley Hospital  
 Terry Stephens, Coldwell Banker, Hometown Realty

## US 219 NORTH



71 Baltimore Street, 2nd Floor  
Cumberland, Maryland 21502

Phone: 301-722-0090

Fax: 301-722-0091

E-mail: [info@greatercc.org](mailto:info@greatercc.org)

### **TGCC's Mission**

*The mission of TGCC is to help identify opportunities for collaboration to enhance the quality of life in the region, negotiate broad and sound solutions to community issues and to serve as convener, facilitator and catalyst for regional responsiveness and community improvement.*

# ***North/South Appalachian Highway Action Plan & Advancements***

### **Awareness & Advocacy**

Members of the Core Work Group and the Coalition have been meeting with elected officials at the local, state and federal level in Maryland, Pennsylvania and West Virginia to advance both legs of this highway. A number of these elected officials have joined the Coalition and/or have provided resolutions or letters of support. On November 17 of this year, a group of Coalition members will travel to Washington, D.C. to meet with Senators Cardin & Mikulski (MD), Casey & Specter (PA) and Byrd & Rockefeller (WV). In January 2010, we will travel again to Washington to meet with corresponding Representatives.

### **Build the Coalition**

As a grassroots organization formed in July 2009, the N/S Highway Coalition currently has 85 members that include elected officials, business leaders and community organizations from Maryland, Pennsylvania & West Virginia. Our goal is to aggressively increase the Coalition membership and create a strong voice of advocacy in support of this project.

### **Complete the Initial Environmental Impact Studies for 219 N and 220 S**

Before the road can be built, environmental impact studies in two phases need to be complete. Both legs of the Corridor have been stalled on the initial study phase (DEIS). After a focused advocacy campaign, Maryland Governor Martin O'Malley restored \$750,000 to complete the initial impact study for 220 S with West Virginia, which had already encumbered its share of the cost. We will now focus on the 219 N leg, which is funded by Maryland and Pennsylvania. At the same time, we will begin to advocate for funding for the final environmental impact studies (FEIS) for legs.

## **N/S Highway Core Work Group**

### **Kim Leonard, Chair**

Aircon Engineering—[kim.leonard@airconeng.com](mailto:kim.leonard@airconeng.com)/301-722-2269

### **David Moe, Co-Chair**

[dave.mojack@gmail.com](mailto:dave.mojack@gmail.com)/301-334-3448

### **Jim Hinebaugh**

Garrett County Economic Development—[jimhinebaugh@garrettcountry.org](mailto:jimhinebaugh@garrettcountry.org)/301-334-1921

### **Kolin Jan**

Allogany County Chamber of Commerce—[kolin@alleganycountychamber.com](mailto:kolin@alleganycountychamber.com)/301-722-2820

### **Colleen Peterson**

The Greater Cumberland Committee—[cpeterson@greatercc.org](mailto:cpeterson@greatercc.org)/301-722-0090

### **Mona Ridder**

Mineral County Development Authority—[info@wv-mcda.com](mailto:info@wv-mcda.com)/304-788-2233

### **Ed Silvetti**

Southern Alleghenies Planning & Development Commission—[silvetti@sapdc.org](mailto:silvetti@sapdc.org)/814-949-6500

### **Commissioner John Vatavuk**

Somerset County (Vice Chair)—[vatavukj@co.somerset.pa.us](mailto:vatavukj@co.somerset.pa.us)/814-445-1400