

WELCOME



US 219 South  
(Meyersdale to I-68)

Project Update  
June 26, 2015

# US 219 Study Limits





# Project Team



- Pennsylvania DOT
- Maryland SHA
- FHWA – Maryland and Pennsylvania



# US 219 Project Background



- Original Project Planning Study started in 2002
- Joint Study with Maryland SHA and PennDOT
- Length: 2.5 miles in Maryland and 5.5 miles in Pennsylvania
- Public Meetings
  - Informational Open House (June 2002)
  - Informational Open House (February 2003)
  - Alternates Public Workshop (November 2003)
- Project went on hold in 2007
- Project re-started in 2013
- Informational Meeting was held September 2014



# Change in Project Delivery



- Before: National Environmental Policy Act (NEPA) assessment on entire corridor (I-68 to Meyersdale).
- Recent Change: Different funding levels between Maryland and Pennsylvania. Construction funding has been provided for breakout project in Maryland.
- New Approach: Planning & Environmental Linkage (PEL) Study to screen concepts between both states, with subsequent NEPA assessments on breakout projects.

# What is PEL?

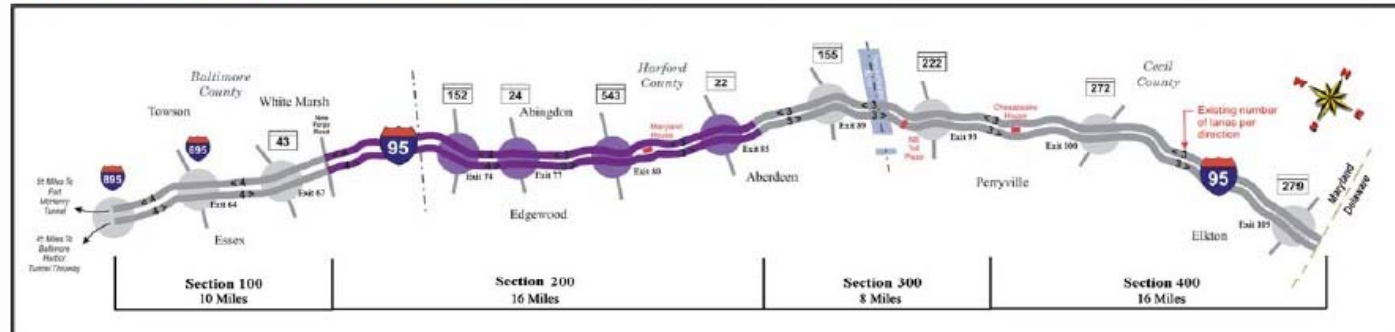
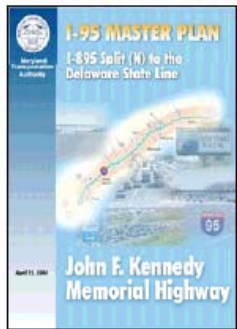


- Approach to transportation decision making that considers environmental, community and economic goals early in the planning stage.
- A process supported by the Federal Highway Administration
- Allows for the use of “NEPA – like” processes to help agencies work with stakeholders to make key project decisions.

# Where have PEL approaches been used?



## I-95 MASTER PLAN



- Study took place between 2000 and 2002.
- The I-95 Master Plan study area encompassed 49 miles of I-95 from the I-95/I-895(N) split to the Delaware State Line.
- The I-95 Master Plan identified and recommended solutions for existing and future transportation needs along the study area.
- The I-95 Master Plan identified four independent projects: Sections 100, 200, 300, and 400.
- Section 100 is currently under construction.
- Recommended concepts to be carried forward for further evaluation.

### THREE CONCEPTS:

**Concept C-1: No-Build** - This concept retains the existing I-95 highway and associated interchanges as they are while allowing for routine maintenance and safety upgrades.

**Concept C-5: Managed Roadways** - This concept includes two managed lanes per direction between the I-95/I-895(N) split and MD 543 and one additional general purpose lane per direction north of MD 24.

**Concept C-6: General Purpose Lanes (GPL)** - This concept includes the provision of additional GPLs as necessary to accommodate the projected travel demand. It includes six GPLs per direction between the I-95/I-895(N) split and MD 152, five GPLs per direction between MD 152 and MD 543, and four GPLs north of MD 543.

Will continue to review the Alternatives previously developed from the original Project Planning Study.

- No-Build
- Alternative D
- Alternative AE
- Alternative E / E-Shift
- Interchange at I-68:
  - Option #1 with flyover ramps
  - Option #2 with loop ramp

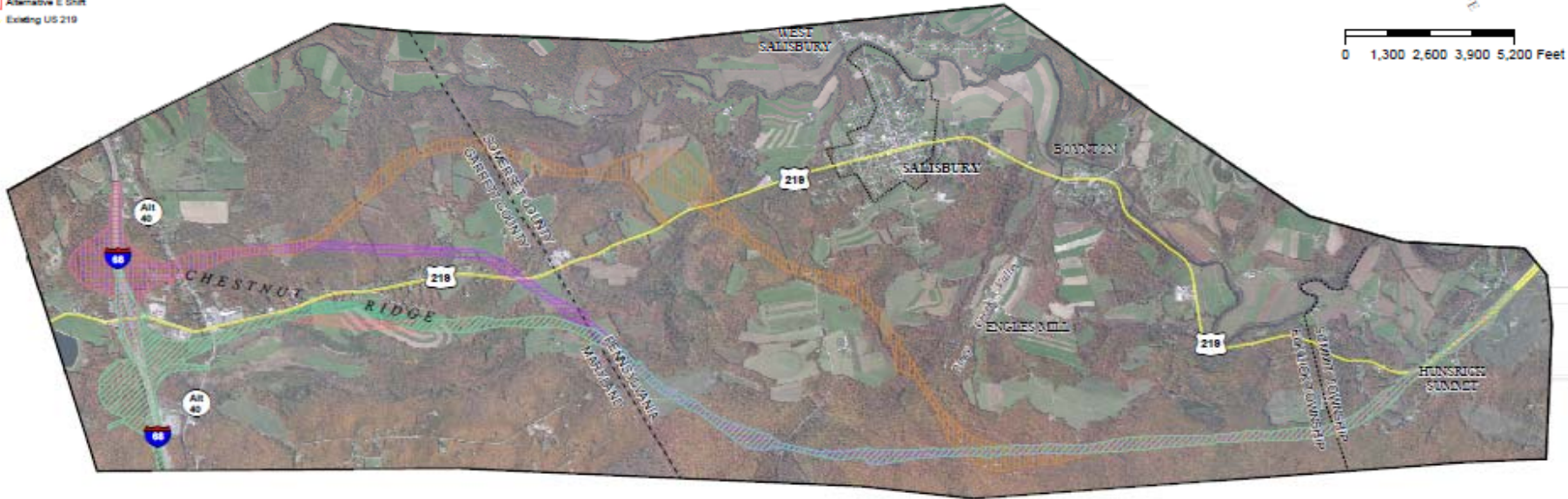




# ALTERNATIVES UNDER CONSIDERATION

## Alternatives D, E, E Shift, AE

-  Alternative E
-  Alternative D
-  Alternative AE
-  Alternative E Shift
-  Existing US 219



# ALTERNATIVES UNDER CONSIDERATION

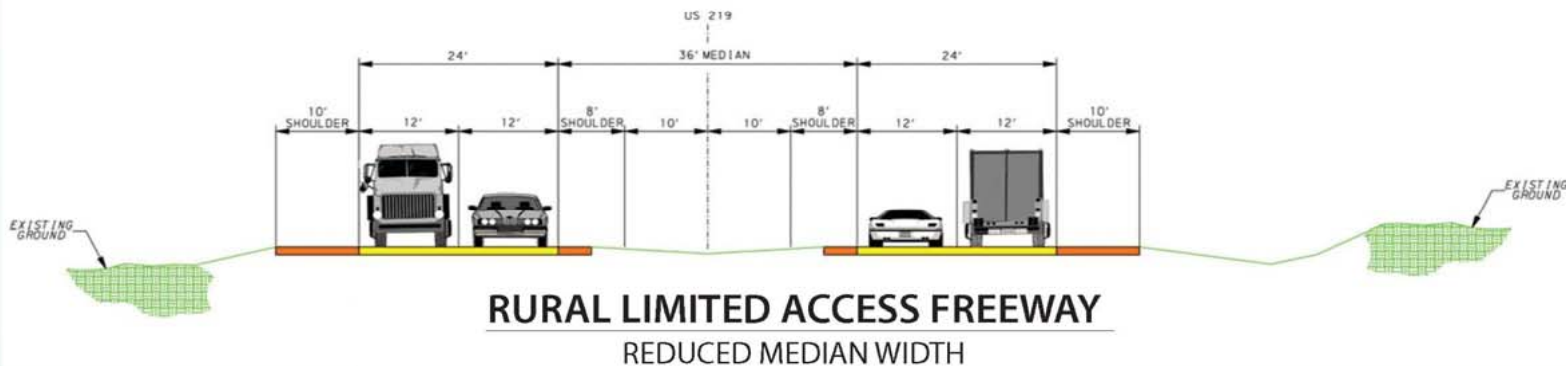


## Pennsylvania Typical Section

Width of typical sections varies by state:  
PA=60 feet  
MD=36 feet



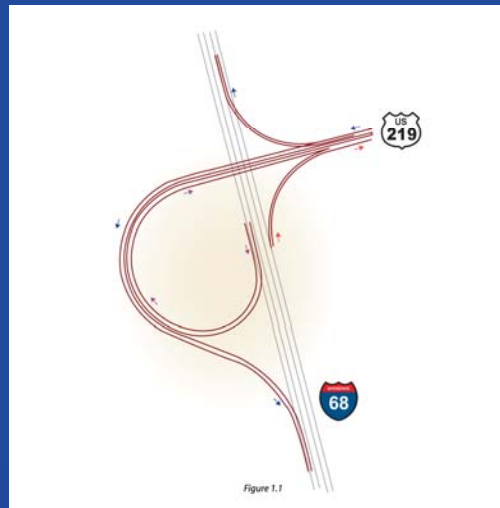
## Maryland Typical Section



# Interchange Options from Original Project Planning Study



- High Speed Interchange - Option 1
  - Allows for ramp speeds of 45 mph or higher
  - Construction of long ramps and flyovers will result in higher right-of-way costs



- Low Speed Interchange – Option 2
  - Loop Ramp necessitates lower ramp speeds
  - Less expensive than high speed interchange



# US 219 PEL Study Key Notes



- Working with Garrett County to understand Economic Development needs
- Need to demonstrate Independent Utility and Logical Termini for breakout projects
- Will evaluate previous interchange options and assess other potential interchange solutions



# Environmental Studies / Sensitive Features



- Residential Areas / Neighborhoods
- Community Facilities
- Farming Operations / Access
- Cultural Resources
- Land Use / Development Plans
- Aquatic Resources
- Quality of Life
  - Noise
  - Visual / Aesthetics

- **Meet with US 219 Citizen Advisory Committee Members**
  - Summer 2015
- **Project Team Working with Environmental Review Agencies on PEL activities**
  - Summer/Fall 2015
- **Hold Informational Workshop to review PEL assessment**
  - Fall 2015
- **PEL Recommendation**
  - *Winter 2015/2016*